

# Integrated Humanities

## Curriculum

### **S.1 Curriculum: Our city – Hong Kong**

- ✿ Early history and development of Hong Kong
- ✿ Land use in Hong Kong
- ✿ Labour Market in Hong Kong
- ✿ Core values in Hong Kong

### **S.2 Curriculum: Our country – China & Our world history**

- ✿ China – water resource, opening –up and development of China and Chinese culture
- ✿ World History - Early civilizations, Ancient Greece and Renaissance, Political Revolutions and Industrial Revolution

## Assessments

### **Internal**

#### **Secondary ONE**

Assessment 1 & 3 (Examinations)

Content	Weighting
Examination	70%
Coursework (Assignment and Tests)	30%

Assessment 2 (Uniform Test)

Content	Weighting
Uniform Test	50%
Coursework (Assignment and Tests)	50%

#### **Secondary TWO**

Assessment 1 & 3 (Examinations)

Particulars	Content	Weighting	Weighting of the Modules
Module 1 (Water resources in China & World History)	Examination	70%	70%
	Coursework (Assignment and Tests)	30%	
Module 2 (Modern China)	Examination	70%	30%
	Coursework (Assignment and Tests)	30%	

Assessment 2 (Uniform Test)

Particulars	Content	Weighting	Weighting of the Modules
Module 1	Uniform Test	50%	70%

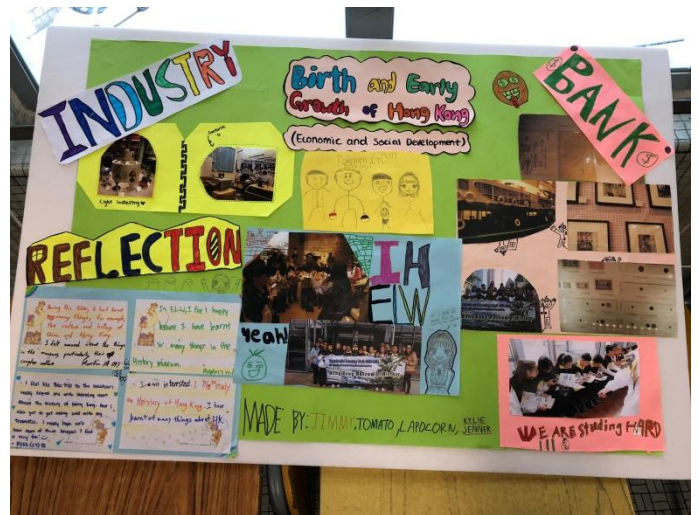
(Water resources in China & World History)	Coursework (Assignment and Tests)	50%	
Module 2 (Modern China)	Uniform Test	50%	30%
	Coursework (Assignment and Tests)	50%	

## Learning Activities

### S1 Project Learning in ELW

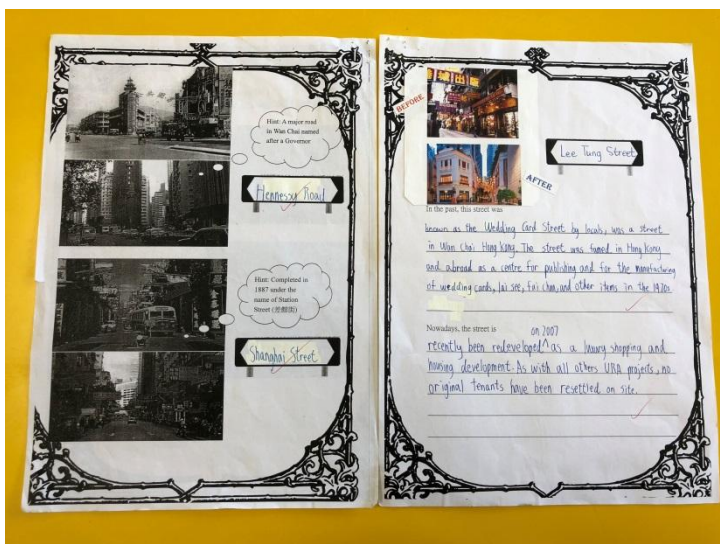


Visit in Coastal Defence Museum

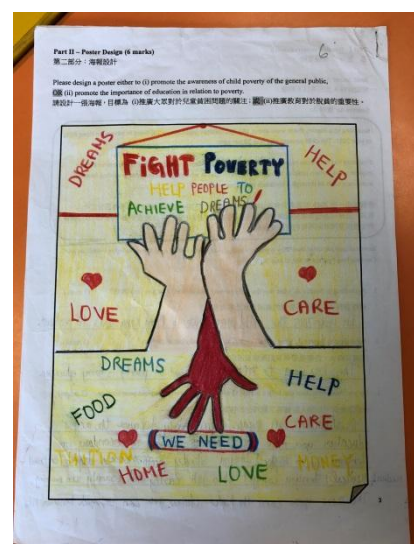


Students' work : Cardboard Design

### S1 Activity Worksheets



Hong Kong Streets : Old and New Faces

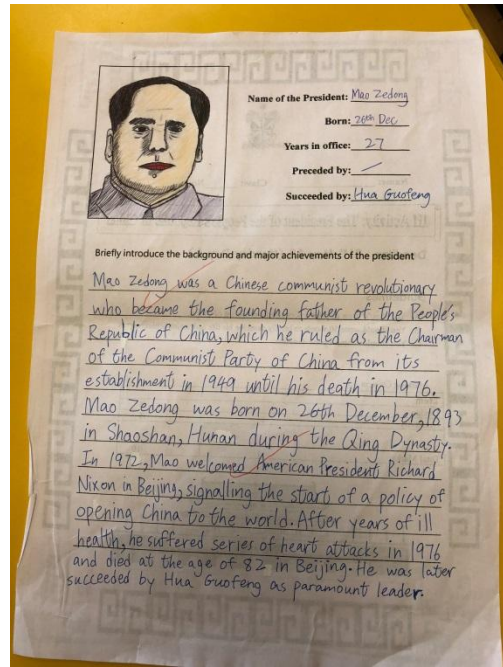


Poster Design : Care of Child Poverty

## S2 Activity worksheets



Making Clay Tablets : Hieroglyph



Knowing the Chinese Presidents